



Rabbit anti MIG 7 Polyclonal Antibody

Alternative Name(s): TOX4; TOX high mobility group box family member 4, Migration inducing protein-7, MIG7;

Order Information

- **Description:** MIG 7
- **Catalogue:** 602-920
- **Lot:** See label
- **Size:** 100ug/200ul
- **Host:** Rabbit
- **Clone:** nan
- **Application:** IHC(P), WB
- **Reactivity:** Hu

ANTIGEN PREPARATION

A synthetic peptide MAASRCSGLS corresponding to the N-terminus of human MIG-7 protein.

BACKGROUND

Migration-inducing protein 7 (MIG7 or Mig-7) is a cysteine-rich protein found in cell membranes and cytoplasm of carcinoma cells. It is a new potential marker for circulating and migrating cancer cells where it facilitates tumor cell dissemination by increasing invasion and promoting the process of vasculogenic mimicry. Mig-7 is expressed restricted in carcinoma cells, thus it has significant potential as an early marker of migrating and circulating carcinoma cells.

PURIFICATION

The Rabbit IgG is purified by Epitope Affinity Purification

FORMULATION

This affinity purified antibody is supplied in sterile Phosphatebuffered saline (pH7.2) containing antibody stabilizer

SPECIFICITY

This antibody recognizes ~23 kDa of MIG-7 protein.. This antibody also reacts with human. The other species are not tested.

STORAGE

The antibodies are stable for 24 months from date of receipt when stored at -20oC to -70oC. The antibodies can be stored at 2oC-8oC for three month without detectable loss of activity. Avoid repeated freezing-thawing cycles.

APPLICATIONS/SUGGESTED WORKING DILUTIONS*

- Western Blot: 0.1-1 µg/ml
- ELISA: 0.01-0.1 µg/ml
- Immunoprecipitation: 2-5 µg/ml
- IHC: 2-10 µg/ml
- Flow cytometry: Not tested
- Molecular Weight: 23.0
- Positive Control: Kidney Tissue
- Cellular Location: Cell Membrane

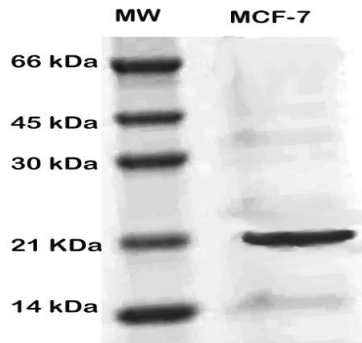
*Optimal dilutions should be determined by researchers for the specific applications.

FOR RESEARCH USE ONLY.

AbboMax, Inc 2528 Qume Drive, Suite 8, San Jose, California 95131, USA
1 408-573-1898 (Tel). 1 408-573-1858 (Fax). www.abbomax.com info@abbomax.com



DATA ATTACHMENTS



Western Blot: The cell lysate derived from MCF-7 was immunoprobed by Rabbit anti-MIG-7 (Cat#602-920) at 1:500. An immunoreactive band is observed around ~23kDa.

REFERENCES

FOR RESEARCH USE ONLY.

AbboMax, Inc 2528 Qume Drive, Suite 8, San Jose, California 95131, USA
1 408-573-1898 (Tel). 1 408-573-1858 (Fax). www.abbomax.com info@abbomax.com